

MAGELLAN™ 3410VSi



High Performance Scanning for the Point of Sale



ON-COUNTER HIGH PERFORMANCE BAR CODE READER

The Magellan 3410VSi series of scanners continue the Datalogic tradition of high performance imaging for the point of sale. With the same cables, mounts and exterior plastics as the Magellan 3450VSi, the 3410VSi scanner is easy to integrate into existing installations. The new electronics platform allows the M3410VSi to power from a single 5V USB connection, providing outstanding performance and easy connection to any POS system.

With a large field of view and the capabilities of imaging, the 3410VSi scanners provide outstanding performance on hard-to-read bar codes and seamless reading of a wide variety of bar codes. This Magellan scanner enables both high speed sweep and presentation scanning techniques, ensuring maximum productivity and ergonomic ease, even with truncated (shortened), out-of-spec or poorly printed codes.

ENHANCING THE CUSTOMER EXPERIENCE

The optional Magellan Customer Service Scanner (CSS) enables retailers to easily engage their customers in mobile commerce programs, allowing them to scan bar codes from mobile phone screens or paper coupons while the cashier continues to scan regular items in parallel, resulting in a significant reduction in total transaction time.

ENTERPRISE FEATURES

Remote Management is supported for OPOS, JavaPOS, Toshiba Remote Management with IBM Systems Director® and Wavelink® Avalanche®. Additional capabilities are available with the Value Added Features included in every Magellan scanner.

FEATURES

- Advanced digital imaging provides class-leading performance and reliability
- Seamless 1D, 2D and Digimarc® digital watermark reading
- Smoothly reads all bar codes, whether displayed on cell phones or printed
- Subtle, adaptive illumination for user comfort
- Solid-state electronics for silent operation and superior reliability
- Powers from single Type A USB port- 2.5 W, available Magellan Customer Service Scanner (CSS) with omni-mount for reading cell phones, coupons and loyalty cards
- Software driven - flexible and upgradeable
- Image capture
- Micro SD card slot
- Multiple interfaces in every unit
- Powered USB auxiliary port - Not enabled when connected to 5V USB Type A host port
- Checkpoint Systems and Tyco Sensormatic EAS compatible
- Diagnostics reporting
- EASEOFCARE Service Plans offer a wide range of service options to protect your investment, ensuring maximum productivity and ROI

INDUSTRY - APPLICATION

- Retail: Point of Sale, Mobile Marketing Capabilities, Age Verification, 2D Bar Codes



MAGELLAN™ 3410VSi

TECHNICAL SPECIFICATIONS

DECODING CAPABILITY

1D / Linear Codes	Autodiscriminates all standard 1D codes including GS1 DataBar™ linear codes.
2D Codes	Aztec Code, Data Matrix, QR Code
Stacked Codes	GS1 DataBar Composites; GS1 DataBar Expanded Stacked; GS1 DataBar Stacked; GS1 DataBar Stacked Omnidirectional; Micro PDF417, PDF417
Digital Watermarks	Optional support for Digimarc® Barcodes / GS1 DW Code

ELECTRICAL

Power Requirements	AC Input: 100-240 VAC, 50-60 Hz DC Input: 5-12V
Power Consumption	Maximum: 2.25W @ 5V; 3.3W @ 12V Typical (RMS): 1.6W @ 5V; 2.1W @ 12V Sleep Mode (RMS): 0.95W @ 5V; 1.25W @ 12V

ENVIRONMENTAL

Ambient Light	0 to 86,100 lux
ESD Protection (Air Discharge)	25 kV
Humidity (Non-Condensing)	5 - 95%
Particulate and Water Sealing	IP52
Temperature	Operating: 10 to 40 °C / 50 to 104 °F Storage/Transport: -40 to 70 °C / -40 to 158 °F

INTERFACES

Interfaces	OEM (IBM) USB; RS-232; USB Keyboard, USB Com, USB TEC
Auxiliary Ports	Powered Type A USB (USB Com requires power supply or 12V Host power)

PHYSICAL CHARACTERISTICS

Dimensions	Magellan Model 3410VSi: 13.7 x 15.2 x 9.4 cm / 5.4 x 6.0 x 3.7 in
Weight	0.6 kg / 1.3 lb

READING PERFORMANCE

Image Capture	Graphic Formats: BMP, JPEG
Image Sensor	1 MP; 1280 x 800 pixels; Graphic Formats: JPEG, BMP
Light Source	Multiple diffused LEDs, orientation and wavelength optimized for eye comfort
Print Contrast Ratio (Minimum)	25%
Read Height	14.0 cm / 5.5 in
Read Rate (Maximum)	30 Million pixels per second
Reading Angle	Pitch: +/- 65°; Roll (Tilt): 0 - 360°; Skew (Yaw): +/- 75°
Reading Indicators	Audio beeper with adjustable tone and volume; Good Read LED; Good Transmission
Resolution (Maximum)	5 mil

READING RANGES

Typical Depth of Field	Printing resolution, symbol length, scan angle, contrast and ambient light dependent. 1D / Linear Codes 5 mils: 0 to 6.4 cm / 0 to 2.5 in 10 mils: 0 to 15.2 cm / 0 to 6.0 in 13 mils: 0 to 20.3 cm / 0 to 8.0 in 2D Codes (Optional) 6.6 mils: PDF: 0 to 5.1 cm / 0 to 2.0 in 10 mils: PDF: 0 to 12.7 cm / 0 to 5.0 in 10 Mils: Data Matrix: 0 to 6.4 cm / 0 to 2.5 in 20 Mils: Data Matrix: 0 to 18.0 cm / 0 to 7.0 in
-------------------------------	---

SAFETY & REGULATORY

Agency Approvals	The product meets necessary safety and regulatory approvals for its intended use. The Quick Reference Guide for this product can be referred to for a complete list of certifications.
Environmental Compliance	Complies to China RoHS; Complies to EU RoHS
LED Classification	EN62471 and IEC62471 Lamp Illumination Exempt Group

UTILITIES

Scanalyzer	Magellan Scanalyzer configuration software is available for download at www.datalogic.com .
OPOS / JavaPOS	OPOS and JavaPOS utilities are available for download at no charge.

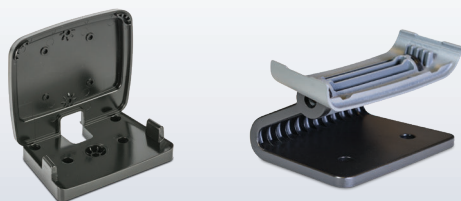
WARRANTY

Warranty	3-Year Factory Warranty
-----------------	-------------------------

ACCESSORIES

Mounts/Stands

- 90ACC0299 Table/Wall Mount
- 90ACC0323 Tilt / Riser Mount



MAGELLAN™ 3450VSi



ON-COUNTER HIGH PERFORMANCE BAR CODE READER

The Magellan™ 3450VSi series of scanners continue the Datalogic tradition of high performance imaging for the high-volume point-of-sale. By duplicating the speed and large field-of-view of laser scanners and expanding the capabilities of imaging, the 3450VSi scanners provide outstanding performance on hard-to-read bar codes and seamless reading of a wide variety of bar codes. This Magellan scanner enables both high speed sweep and presentation scanning techniques, ensuring maximum productivity and ergonomic ease, even with truncated (shortened), out-of-spec or poorly printed codes.

ENHANCING THE CUSTOMER EXPERIENCE

The optional Magellan Customer Service Scanner (CSS) enables retailers to easily engage their customers in mobile commerce programs, allowing them to scan bar codes from mobile phone screens or paper coupons while the cashier continues to scan regular items in parallel, resulting in a significant reduction in total transaction time.

ENTERPRISE FEATURES

Remote Management is supported for OPOS, JavaPOS, Toshiba Remote Management with IBM Systems Director® and Wavelink® Avalanche®. Additional capabilities are available with the Value Added Features included in every Magellan scanner.

FEATURES

- Advanced digital imaging provides class-leading performance and reliability
- Seamless 1D, 2D and Digimarc® digital watermark reading
- Smoothly reads all bar codes, whether displayed on cell phones or printed
- Subtle, adaptive illumination for user comfort
- Solid-state electronics for silent operation and superior reliability
- Available Magellan Customer Service Scanner (CSS) with omni-mount for reading cell phones, coupons and loyalty cards
- Software driven - flexible and upgradeable
- Image capture
- Micro SD card slot
- Multiple interfaces in every unit
- Powered USB auxiliary port
- Checkpoint Systems and Tyco Sensormatic EAS compatible
- Diagnostics reporting
- EASEOFCARE Service Plans offer a wide range of service options to protect your investment, ensuring maximum productivity and ROI

INDUSTRY - APPLICATION

- Retail: Point of Sale, Mobile Marketing Capabilities, Age Verification, 2D Bar Codes



MAGELLAN™ 3450VSi

TECHNICAL SPECIFICATIONS

DECODING CAPABILITY

1D / Linear Codes	Autodiscriminates all standard 1D codes including GS1 DataBar™ linear codes.
2D Codes	Aztec Code, Data Matrix, QR Code
Postal Codes	Australian Post; British Post; Canadian Post; China Post; IMB; Japanese Post; KIX Post; Planet Code; Portuguese Post; Postnet; Royal Mail Code (RM4SCC); Swedish Post
Stacked Codes	GS1 DataBar Composites; GS1 DataBar Composites; GS1 DataBar Expanded Stacked; GS1 DataBar Stacked; GS1 DataBar Stacked Omnidirectional; Micro PDF417, PDF417
Digital Watermarks	Optional support for Digimarc® Barcodes / GS1 DW Code

ELECTRICAL

Power Requirements	AC Input: 100-240 VAC, 50-60 Hz DC Input: 5-12 V
Power Consumption	Operating (Maximum): 3.8 Watts; Operating (Nominal): 3.6 Watts Sleep Mode: 3.0 Watts

ENVIRONMENTAL

Ambient Light	0 to 86,100 lux
ESD Protection (Air Discharge)	25 kV
Humidity (Non-Condensing)	5 - 95%
Particulate and Water Sealing	IP52
Temperature	Operating: 10 to 40 °C / 50 to 104 °F Storage/Transport: -40 to 70 °C / -40 to 158 °F

INTERFACES

Interfaces	OEM (IBM) USB; RS-232; USB Keyboard, USB Com
Auxiliary Ports	Powered Type A USB (USB Com)

PHYSICAL CHARACTERISTICS

Dimensions	Magellan Model 3450VSi: 13.7 x 15.2 x 9.4 cm / 5.4 x 6.0 x 3.7 in
Weight	0.6 kg / 1.3 lb

READING PERFORMANCE

Image Capture	Graphic Formats: BMP, JPEG
Image Sensor	1280 x 1024
Light Source	Multiple diffused LEDs, orientation and wavelength optimized for eye comfort
Print Contrast Ratio (Minimum)	25%
Read Height	14.0 cm / 5.5 in
Read Rate (Maximum)	39 Million pixels per second
Reading Angle	Pitch: +/- 65°; Roll (Tilt): 0 - 360°; Skew (Yaw): +/- 75°
Reading Indicators	Audio speaker with adjustable tone and volume, supports .wav files; Good Read LED; Good Transmission
Resolution (Maximum)	5 mil

READING RANGES

Typical Depth of Field	Printing resolution, symbol length, scan angle, contrast and ambient light dependent. 1D / Linear Codes 5 mils: 3.8 to 8.1 cm / 1.5 to 3.2 in 7.5 mils: 1.3 to 11.4 cm / 0.5 to 4.5 in 10 mils: 0 to 15.2 cm / 0 to 6.0 in 13 mils: 0 to 20.3 cm / 0 to 8.0 in 2D Codes 6.6 mils: PDF: 3.8 to 10.2 cm / 1.5 to 4.0 in 10 mils: PDF: 0 to 12.7 cm / 0 to 5.0 in 10 mils: Data Matrix: 1.3 to 6.4 cm / 0.5 to 2.5 in 20 mils: Data Matrix: 0 to 18.0 cm / 0 to 7.0 in
-------------------------------	---

SAFETY & REGULATORY

Agency Approvals	The product meets necessary safety and regulatory approvals for its intended use. The Quick Reference Guide for this product can be referred to for a complete list of certifications.
Environmental Compliance	Complies to China RoHS; Complies to EU RoHS
LED Classification	EN62471 and IEC62471 Lamp Illumination Exempt Group

UTILITIES

Scanalyzer	Magellan Scanalyzer configuration software is available for download at www.datalogic.com .
OPOS / JavaPOS	OPOS and JavaPOS utilities are available for download at no charge.

WARRANTY

Warranty	3-Year Factory Warranty
-----------------	-------------------------

ACCESSORIES

Mounts/Stands

90ACC0299 Table/Wall Mount
90ACC0323 Tilt / Riser Mount

